



Approx. 15 min. from Yahiko Shrine

Yahiko Otorii Gate

The otorii (big gate), located along the prefectural road connecting Tsubame City and Yahiko Village, marks the entrance to Yahiko. Built to commemorate the opening of the Joetsu Shinkansen in 1982, the name plaque on the gate is over 20 square meters in size. It is the tallest four-pillar torii gate in Japan, at 30.16 meters.

☎ +81-256-94-3154 (Yahiko Tourist Association)
📍 7342-4 Yahagi, Yahiko Village, Nishikambara District
▶MAP: C-5

Scenery evolving with the seasons



View from Mt. Yahiko
▶MAP: B-3



Healing nature, thrilling factories

A journey that will awaken the senses



Yahiko Park and Maple Valley
▶MAP: C-4

Incredible illuminations during the fall foliage season!

Yahiko Chrysanthemum Festival

The Chrysanthemum Festival, held on the grounds of Yahiko Shrine, is one of the largest autumn traditions in Japan in quality and quantity of demonstrations. The artworks on display, painstakingly crafted with love and care, are a must-see. Don't miss the enormous landscaped flower bed, made with 30,000 chrysanthemums.

☎ +81-256-94-3154 (Yahiko Tourist Association)
📍 2887-2 Yahiko, Yahiko Village, Nishikambara District
🕒 Works on display 24 hr., 7 days during Nov.
🚗 2,000 standard vehicles
▶MAP: C-4

Held in Nov.



About Yahiko

Yahiko Village

Niigata's jewel for history and tourism

Yahiko Village has prospered underneath Yahiko Shrine, with over 2,400 years of history. Recently, new attractions have grown alongside long-established restaurants and inns in the area. Hot springs, famous for caring for skin and relieving fatigue, are also popular.

DATA As of October 31, 2022

- Area: 25.17 km²
- Population: 7,696
- Households: 2,773



Held in Jul.

Yahiko Lantern Festival

A three-day festival that brings the excitement of summer to Yahiko. The second day of the festival is full of highlights, with children carrying lanterns and geisha making an appearance in the midday, and the evening climaxes with a grand lantern parade and a fireworks display. This ritual is designated as a national Important Intangible Folk-Cultural Property.

☎ +81-256-94-1025 Yahiko Lantern Festival Supporters Association
📍 Yahiko Village ▶MAP: C-4

English

Tsubame City & Yahiko Village Sightseeing Guide & Map

燕と弥彦MAP

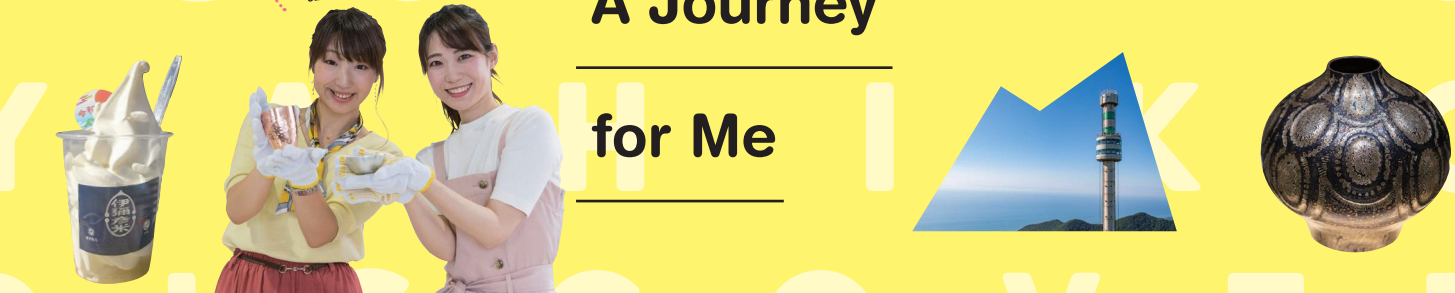
つばめ

やひこ

ぐるぐる



...and check out the videos!



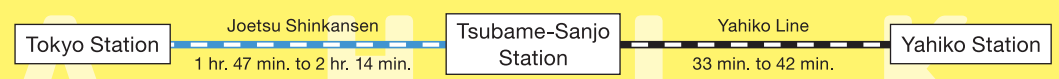
A Journey

for Me

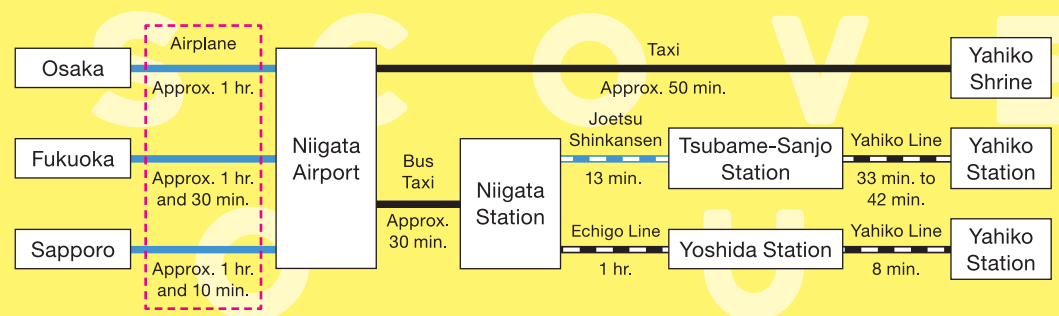
ACCESS



From Tokyo



From Osaka/Fukuoka/Sapporo



Executive Office, Tsubame-Yahiko Area Tourism Coordination Association
(in the Tourism Promotion Division, Tsubame City Office)

Tsubame City Tourist Association
<https://tsubame-kankou.jp/en/>



Yahiko Tourist Association
<https://www.e-yahiko.com/en/>

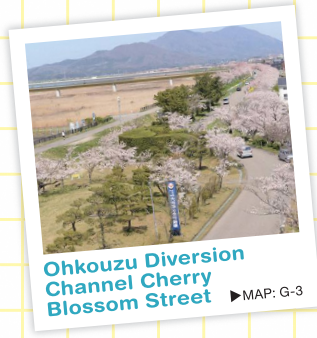


Digital MAP



Scan this QR code to get a digital pamphlet with links to detailed information on the spots listed in this brochure.

*All photos are for illustrative purposes.
*Please confirm with your destinations before your trip, as opening schedules may change for some facilities.



Bunsui Kimono Parade at the Tsubame Cherry Blossom Festival

Held in Apr.

Elegant costumed ladies selected as Oiran, accompanied by their attendants, parade through rows of cherry trees in a colorful, vibrant procession. This is an event of gratitude and hospitality that is said to have its origins in a costume parade held around 1924 to commemorate the completion of the Ohkousu Diversion Channel and the cherry trees that were planted there for their adoring public.

☎ +81-256-64-7630
🏠 (Tsubame City Tourist Association)
📍 Tsubame City Bunsui District
🅓 Parking available for the day of the event
▶MAP: G-3



Mt. Kugami Shuten Doji Parade

Held in Sep.

Shuten Doji is a legendary demon, one of the three most powerful in Japan. But, the demon of Tsubame is hardly a bad guy. He's just a strong, kind hero who wishes to fulfill your heart's desires. Come get photos and videos of the country's most powerful and fearsome demon army and gain its blessings!

☎ +81-256-64-7630
(Tsubame City Tourist Association)
🏠 5866-1 Kugami, Tsubame City
(Roadside Station SORABU Kugami)
🅓 Available ▶MAP: D-3



Ryokan: A Local Treasure

Ryokan, a monk, was born in 1758 in Izumozaki, Echigo Province, now Niigata Prefecture. After harsh ascetic training and traveling to many lands, he lived on Mt. Kugami for some time. He remains widely-loved, known for his excellence in poetry and writings, and his kindness to children.



Kokujoji Temple

A Shingon sect Buddhist temple located halfway up Mt. Kugami, with links to Ryokan. Founded in 709, it is the oldest temple in the prefecture. It celebrated its 1,300th anniversary in 2009.

☎ +81-256-97-3758
🏠 1407 Kugami, Tsubame City
🅓 Available ▶MAP: D-3

Tsubame: A city with an artisan history of over 400 years.
Yahiko: Inspirational vistas unparalleled in Niigata.
Where else could you find two hidden gems so close together?
Hint: Right at the heart of Niigata Prefecture.

About Tsubame

Tsubame City

A world-class metalworking city

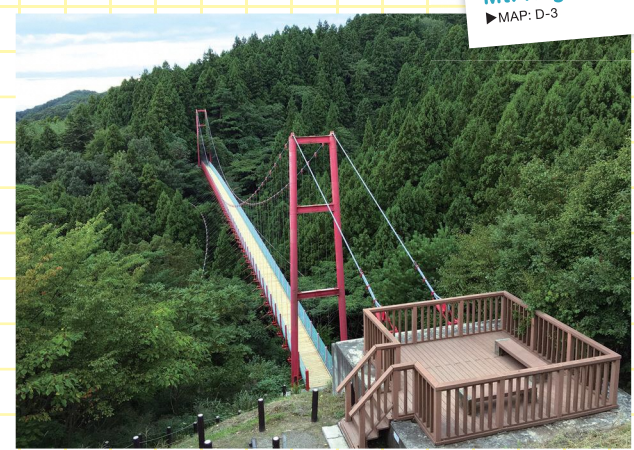
Tsubame is renowned worldwide for its cutlery and other metal work products. It flourished as an artisanal city and is dotted with workshops and stores where visitors can experience traditional hands-on techniques. Its local specialties born from artisan culture are also delightful.

DATA As of October 31, 2022

- Area: 110.96 km²
- Population: 77,480
- Households: 30,643



A spot linked to Ryokan



Sengando Suspension Bridge

This 124-meter-long red suspension bridge is located halfway up Mt. Kugami, connecting the Asahiya Observation Deck and Gogoon landmarks. Enjoy a restorative mid-air tour of lush greenery in spring and fiery autumn leaves in fall. This bridge was named one of the 50 Best Bridges in Niigata.

☎ +81-256-77-9233
(Tsubame City Tourism Promotion Division)
🏠 Kugami, Tsubame City 🅓 59 vehicles
▶MAP: D-3

Approx. 30 min. from Sanjo-Tsubame IC

Discover Your
Tsubame

A journey for you: see, touch, and learn

Tsubame's metalworking fame

Tsubame City sprawls from the Shinano River to the Ohkouzu Diversion Channel. Although both bodies of water now flow calmly and peacefully, the Shinano River used to rage and torment people, especially farmers, with frequent flooding. This is where making Japanese-style nails began as a side business for farmers in the Edo period (1600s). It is said that the roots of Tsubame City's current global reputation for craftsmanship can be traced to this nail making.

In the 1700s, a range of metalworking industries emerged, including Tsuiki Copperware, files, and kiseru tobacco pipes. Among them, Tsuiki Copperware was made from copper mined at the Maze Copper Mine. Its site is still viewable from Mt. Yahiko's summit.

Metalworking in Tsubame thus flourished, but after the Meiji Restoration (c.1875) and subsequent modernization, changes in lifestyles

brought hard times for artisans. However, even in difficult times, they continued to hone their skills, and when demand for cutlery increased from other countries, the town successfully built up mass production based on its advanced techniques. It also developed routes for export. After the Second World War, the town developed stainless steel processing techniques, broadening their production to metal pots, pans, and more. This is how Tsubame became the town of craftsmanship that it is known as today. Incidentally, pork fatback ramen, which originated in Tsubame, is a soul food that has been satisfying the stomachs of busy craftspeople for many years now, with its thick, rich soup staying hot and preventing the noodles becoming too soft.

Currently, there are a number of places where you can experience Tsubame's character, such as factory tours, metalwork workshops, and shopping. We hope you will come back again and again to explore the depth of history and character Tsubame offers.

Tsubame Industrial Materials Museum:
Workshop Hall where you can be an artisan

Feel the sounds and heat of a factory first-hand and experience the unadulterated techniques of craftsmen

Going hands-on with metal polishing techniques, the foundations of the metalworking industry

Tsubame City Migakiya Ichibankan

This metal polishing workshop is a beacon of Tsubame City's world-class metal polishing techniques and serves to train successors. At the factory, visitors can observe polishing process training and try out finish polishing stainless steel beer cups. Why not take home your own unique piece as a souvenir? (Reservations required for tours and hands-on experiences)

☎ +81-256-61-6701 📍 3633-7 Koike, Tsubame City 🕒 9:30 am to 12 pm, 1:30 pm to 4 pm 📅 Closed Saturdays, Sundays, national holidays, New Year holidays, and other occasions 📍 Available ▶MAP: E-6

Tsubame Industrial Materials Museum

A blend of video footage and actual works show the transition of industry in Tsubame, beginning with making Japanese-style nails in the early Edo period, as well as the town's manufacturing processes. Visitors can also see the work of Living National Treasure Norio Tamagawa up close and try their hand at applying Tsuchime hammer-patterns to copper cups and making hand-hammered tin cups.

☎ +81-256-63-7666 📍 4330-1 Omagari, Tsubame City 🕒 9 am to 4:30 pm (last registration for hands-on experience at 4 pm) 📅 Closed Mondays (or the following weekday if Monday is a national holiday) and New Year holidays 📍 ¥400 for adults, ¥100 for elementary, junior high, and high school students (Discounts are available for groups) 📍 188 vehicles ▶MAP: E-7



Hands-on



Tour



Craftsmanship bringing life to copper



Gyokusendo

Hand-hammered copperware is a traditional craft of Tsubame, designated as an intangible cultural property. Among them, long-established Gyokusendo opens its workshop to visitors. Experience this old tradition first-hand and reimagine your life anew. The building itself is a registered cultural property bespeaking the tradition that lies within.

☎ +81-256-62-2015 📍 2-2-21 Chuodori, Tsubame City 🕒 8:30 am to 5:30 pm (Tour times: From 10:00 am, 11:00 am, 1:00 pm, 2:00 pm, and 3:10 pm) 📅 Closed Sundays and national holidays 📍 Available ▶MAP: D-7

Perfect for a sweet treat break or a souvenir stop



Sakataya Main Shop

This is a storied confectionery located near the Ohkouzu Diversion Channel Cherry Blossom Street. Its famous miso-manju steamed bun and dumplings make great souvenirs, while the homemade gelato and soft-serve ice cream are perfect for a walk-and-eat tour.

☎ +81-256-97-1660 📍 1073 Okawazu, Tsubame City 🕒 9 am to 6 pm 📅 Open everyday 📍 Available ▶MAP: G-3

Shinano River Weir/ Ohkouzu Diversion Weir



Shinano River Ohkouzu Museum

The Shinano River, well-known to Niigata's residents, once raged across the land, tormenting people with repeated heavy flooding. A diorama and other materials will tell the history of the hardships and the role of the Ohkouzu Diversion Channel, the result of a century-long construction project involving a total of 10 million people.

☎ +81-256-97-2195 📍 Gosengoku, Tsubame City 🕒 9 am to 4 pm 📅 Closed Mondays (or the following day if Monday is a national holiday) 📍 100 vehicles ▶MAP: G-3

TSUBAME AREA

Recommendations from the locals

Must-visit Spots



FACTORY FRONT

As the name suggests, this is your frontman for a gallery of factories, carrying products from Tsubame-Sanjo and other parts of Japan. Great for procuring souvenirs or gifts.

☎ +81-256-46-8720 📍 14-3 Higashiota, Tsubame City 🕒 10 am to 6 pm 📅 Closed Wednesdays and New Year holidays 📍 4 vehicles ▶MAP: D-7



Saito Strawberry Farm

Not only can you buy the giant, juicy Echigohime strawberries straight from the farm, but you can also pick your own and enjoy an all-you-can-eat experience. Strawberry picking season is from mid-March to the end of June. Farm-made jams and gelato are also on offer.

☎ +81-256-47-1519 📍 115 Tsubame, Tsubame City 🕒 10 am to 5 pm 📅 Open everyday from mid-January through June 📍 Available ▶MAP: D-7



High Grade Store

This store showcases the talents of Tsubame-Sanjo crafters, selling as many as 3,000 pieces of professional cooking utensils and high-quality kitchen products. Come feel the quality of these crafts with your own hands.

☎ +81-256-64-8125 📍 912-1 Sugiyanagi, Tsubame City 🕒 10 am to 5 pm 📅 Closed Sundays and national holidays 📍 20 vehicles ▶MAP: E-6



STOCK BUSTERS

Products unsellable through normal channels for various reasons, such as old models or products with out-of-spec packaging, are on offer for special prices thanks to direct connections with trading companies and manufacturers. This makes it an extremely bargain hunter-friendly outlet store.

☎ +81-256-63-2511 📍 2-16 Butsuryu Center, Tsubame City 🕒 10 am to 6 pm 📅 Open daily (some irregular holidays) 📍 200 vehicles ▶MAP: E-6



Roadside Station Tsubamesanjo Regional Products Center

Offers an array of around 10,000 "made in Tsubame-Sanjo" items, like cooking utensils, with the best of local design and high quality. It also offers tourist information.

☎ +81-256-32-2311 📍 1-17 Sugoro, Sanjo City 🕒 9:30 am to 5:30 pm 📅 Closed the first Wednesday of every month and New Year holidays 📍 119 vehicles ▶MAP: E-8



Gogoan

The hermitage where monk Ryokan spent about 20 of his middle-age years. During his time here, he performed zazen meditation and would beg for alms. Stand in this tranquil, historic space and contemplate the world that came before.

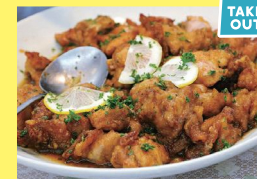
☎ +81-256-77-8233 (Tsubame City Tourism Promotion Division) 📍 Kugami, Tsubame City 📍 Available ▶MAP: D-3



Roadside Station SORAIRO Kugami

A natural paradise, just by the highway. Fresh vegetables are available from local farmers, as well as outdoor goods from Tsubame City. Plus, you can enjoy a Momotaro soft serve, a strawberry-flavored treat based on the popular popsicle that people in Niigata so love, in the container shop! Visitors can also enjoy the facility's drop-in hot spring, Temari no Yu.

☎ +81-256-98-0770 📍 5866-1 Kugami, Tsubame City 🕒 10 am to 6 pm *Some portions of the facility may have different hours. 📅 Open daily 📍 236 vehicles ▶MAP: D-3



Torifuku (Gourmet Plaza)

Fried chicken in a lemony sweet and spicy sauce tops the menu, a soul food gourmet dish from Tsubame's Yoshida area. This spot offers a range of other tasty meals as well.

☎ +81-256-93-1129 📍 198-1 Yoshidahono, Tsubame City 🕒 9 am to 7:15 pm 📅 Closed Tuesdays and the third Sunday and Monday of the month, etc. 📍 15 vehicles ▶MAP: C-6



Yonouduya Main Shop

A Japanese confectionery founded in the Meiji era. Their signature confection, "Kumogakure" (hidden in the clouds), has a refreshing sweetness and delicate texture. This gem has received the Honorary President's Award and the Tea Ceremony Nemoto Award at the National Confectionery Exposition. Anko mochi bean paste balls are also popular.

☎ +81-256-93-2144 📍 2-16 Yoshida kamachi, Tsubame City 🕒 8:30 am to 6 pm 📅 Closed Tuesdays 📍 8 vehicles ▶MAP: C-6

A peaceful journey for the heart

Now is the time to receive the power of Yahiko's goddess

Yahiko Shrine stands at the foot of Mt. Yahiko in a forest of cedar and cypress trees that have stood for five centuries. It is a shrine of pre-eminence in Echigo with a history such that it appears in the ancient *Manyōshū* poetry text, and is still adored by people today as "Goddess Oyahiko." The deity enshrined there, Ame-no-Kagoyama-no-Mikoto, is said to have been tasked by Emperor Jinmu to protect Mt. Yahiko and to have spread fishing, rice cultivation, and sake brewing in the Echigo area. In other words, Yahiko is the birthplace of an industry that still flourishes in Niigata today.

Let us begin our journey with a visit to this shrine. First, passing through the Ichino Torii gate and standing on the stone bridge, you will see the vermilion-colored Tamanohashi bridge on your left. It is believed that only gods can cross the bridge, and it was one of the

very few to escape damage in a great fire during the Meiji era. The water flowing under the bridge once cleansed the feet of visitors before coming to worship at the shrine.

These vast grounds carry a sacred atmosphere, and each step you take seems to cleanse your soul. The Hinotama Ishi (stone of flame), believed to grant wishes if you can easily lift the stone while envisioning your wish, and other features make this the foremost spiritual place in Niigata.

When you reach Yahiko Shrine, pray to the goddess with two bows, four claps, then one bow. After quietly praying, share more of the Oyahiko goddess's power with an omikujii fortune or Goshuin, a large red stamp from the Shinto priests. After the shrine you can take a walkabout. Gourmet lunch and dessert options abound, and the Mt. Yahiko ropeway ride is a fun way to continue your Yahiko trip.

The journey begins with a greeting to the local goddess in Yahiko Shrine



Echigo Ichinomiya Yahiko Shrine

As the pre-eminent shrine in the Echigo region, it has long been worshipped as the foremost spiritual place in Niigata Prefecture. Nestled in lush nature, visitors can enjoy Shinrin-yoku, walking through lush nature, throughout the year. For those wishing for the full measure of its tranquility, we recommend visiting the shrine early in the day to avoid crowds.

☎ +81-256-94-2001
📍 2887-2 Yahiko, Yahiko Village, Nishikambara District
🚗 2,000 standard vehicles
▶ MAP: B-4

An ema plaque brings good fortune in dating!



Sweets are a must-try!



Kanmidokoro Kamakura Yahiko Shrine Shop

It is said that the warabimochi (flavored jelly-like rice cake) confection traces back to the Heian period (beginning late 700s) and took its present form in the Kamakura period (beginning late 1100s). This café uses a rare kind of Japanese warabi starch as a base to create a delicate texture that is both soft and chewy. Be sure to try the drinks that fuse warabimochi with strawberries and matcha.

☎ +81-256-78-7505 📍 2916 Yahiko, Yahiko Village, Nishikambara District ● Open 10 am, last eat-in order at 4 pm, last take-out order at 5 pm 🕒 Open daily 🚫 Not available ▶ MAP: C-4



Finding it hard to choose? Take a moment to enjoy getting lost in the variety



TAKU GLASS

This is a glassware store where artists handcraft each item at their workshops in Yahiko Village. Colorful wind chimes line the eaves. Other accessories include plates, chopstick rests, lamps, bracelets and earrings. These are popular souvenirs and gifts in Yahiko.

☎ +81-256-78-7741 📍 3022-4 Yahiko, Yahiko Village, Nishikambara District ● 9 am to 5 pm 🕒 Closed Wednesdays 🚫 Not available ▶ MAP: C-4

Cheering on competitors from comfy, clean stands!



Yahiko Velodrome

This cycling arena was extensively renovated in July 2020, and now features the spacious and bright Cedar House, complete with a kids' space and nursing room, making it popular with families. Spectators can enjoy matches on large screens. Guests seeking a more upscale experience can take advantage of the Royal Room for only 2,000 yen!

☎ +81-256-94-2066 📍 2621 Yahiko, Yahiko Village, Nishikambara District ● Hours based on event schedule 🕒 Open daily (some irregular holidays) 🚗 Available ▶ MAP: B-4



A summit offering new views with every season



1 min. from Yahiko Shrine by free shuttlebus



Mt. Yahiko Ropeway

Boarding at the ropeway station behind Yahiko Shrine, you can cross 1 km of terrain and reach the summit in about 5 minutes. From the summit of 634-meter-high Mt. Yahiko, you can see the magnificent Echigo Plain, Sado Island, and even the Noto Peninsula on a clear day! The Panorama Tower, a rotating elevated observation tower, offers even more spectacular views.

☎ +81-256-94-4141 📍 2898 Yahiko, Yahiko Village, Nishikambara District ● 8:45 am to 5 pm 🕒 Open daily (Excluding inspection days) 🚗 2,000 standard vehicles ▶ MAP: B-4



Lost in souvenir choices? Let a slow footbath clear your head



Approx. 6 min. from Yahiko Shrine

Omotenashi Plaza

There are hand and foot baths where you can take a break after walking around the village; a farmer's market store selling fresh vegetables; and a food court where you can enjoy a leisurely meal. There is also a row of cute-looking dessert stores where you can purchase take-out treats to enjoy.

☎ +81-256-94-3154 (Yahiko Tourist Association)
📍 1121 Yahiko, Yahiko Village, Nishikambara District ● 10 am to 4 pm (The farmer's market stays open until 5 pm) 🕒 Open everyday (Closing days vary by establishment) 🚗 50 vehicles ▶ MAP: C-4



YAHIKO AREA

Recommendations from the locals

Must-visit Spots



Kamameshi Yahiko

Kamameshi made with locally produced Koshihikari rice and soup stock provides 120% satisfaction. In addition to the gomoku mixed rice and seafood dishes, there is also a delightful Western-style kettle rice gratin with cheese. All rice is cooked to order.

☎ +81-256-94-2245 📍 1127-1 Yahiko, Yahiko Village, Nishikambara District ● 11 am to 2 pm, 5:30 pm to 8 pm (last order: 7:30 pm) 🕒 Open daily (some irregular holidays) 🚗 10 vehicles ▶ Shown in the Yahiko Town Map



Sakaya Yayoi Jinja-mae Shop

This well-stocked local beverage specialist offers around 300 varieties of locally-brewed Niigata sake and authentic shochu (distilled spirits), as well as craft beer made with Niigata Prefecture's agricultural products for take-out. The store itself is also particularly notable in that it is a 200-year-old classic Japanese residence that has been relocated.

☎ +81-256-94-5841 📍 1239-4 Yahiko, Yahiko Village, Nishikambara District ● 8:30 am to 6:30 pm 🕒 Open daily (some irregular holidays) 🚗 2 vehicles ▶ Shown in the Yahiko Town Map



Matsunoya Shokudo

Sweetness followed by a slight spicy punch: this curry rice is so popular with all kinds that the spoons never hit the table. This cafeteria's menu includes a wide variety of soba, udon, and rice bowl dishes.

☎ +81-256-94-2110 📍 1223 Yahiko, Yahiko Village, Nishikambara District ● 10 am to 3 pm 🕒 Open daily (some irregular holidays) 🚫 Not available ▶ Shown in the Yahiko Town Map



Yoshidaya

Offers popular seafood dishes with catches straight from nearby ports. Rosy seabass, rich in fatty content, and rock oysters round out a superb collection. Their signature, the Niigata Prefecture delicacy of Wappa Rice with salmon and salmon roe, is powerfully flavorful.

☎ +81-256-94-2020 📍 941-2 Yahiko, Yahiko Village, Nishikambara District ● 10 am to 3 pm (last order: 2:30 pm), 5 pm to 8:30 pm (last order: 8 pm) 🕒 Open daily (some irregular holidays) 🚗 10 vehicles ▶ Shown in the Yahiko Town Map



Sakura-Ya café

A café in the first-floor lobby of the Sakuraya inn, just in front of Yahiko Station. Indulge in a series of well-beloved lunch delicacies, prepared by traditional Japanese chefs, alongside homemade desserts.

☎ +81-256-94-2009 📍 1043-41 Yahiko, Yahiko Village ● 11 am to 4 pm (lunch ends at 2 pm) 🕒 Closed Fridays 🚗 Available ▶ Shown in the Yahiko Town Map



Shasaian Hirashio

A café facing Yahiko Shrine. Sweet traditional jelly and bean-based treats like anmitsu and zenmai are served in a retro-style space, crafted from a reclaimed classic Japanese residence. On the first floor is a Japanese hand-crafted goods store. The shop sells the ever-popular Iyahikomai soft serve ice cream, made from the specialty local rice brand.

☎ +81-256-94-2162 📍 1240-1 Yahiko, Yahiko Village, Nishikambara District ● 10 am to 6:30 pm (last order 5:30 pm) 🕒 Closed Thursdays 🚗 4 vehicles ▶ Shown in the Yahiko Town Map



Yorozuya Kariya

The Yahiko Musume edamame and minced squid cutlet, a combination of fresh squid, onions, cabbage, and Yahiko Musume edamame, is a must-try. It also won first place overall in the International Local Gourmet Grand Prix.

☎ +81-256-94-2104 📍 1999 Yahiko, Yahiko Village, Nishikambara District ● 9 am to 7 pm 🕒 Open daily (some irregular holidays) 🚗 4 vehicles ▶ Shown in the Yahiko Town Map



Narisawa Shoten

Curry beans are an unmistakable Yahiko-original souvenir. The sweet and savory taste of fried fava beans is perfectly paired with a spicy flavoring.

☎ +81-256-94-2025 📍 1298 Yahiko, Yahiko Village, Nishikambara District ● 9 am to 7 pm 🕒 Open everyday 🚫 Not available ▶ Shown in the Yahiko Town Map



Bunsuido Kashiho

This confectionery's white, chewy panda-style confectionery is a Yahiko specialty that won the Grand Prix award in the Nippon Nationwide Local Snack Ranking. Its Yahiko Musume edamame bean paste is also popular.

☎ +81-256-94-2282 📍 1041-1 Yahiko, Yahiko Village, Nishikambara District ● 9 am to 4 pm 🕒 Closed Wednesdays and the day after the third Wednesday of the month 🚫 Not available ▶ Shown in the Yahiko Town Map